



CLINTON TOWNSHIP, MI

586.790.6100

HOLLY SPRINGS, MS

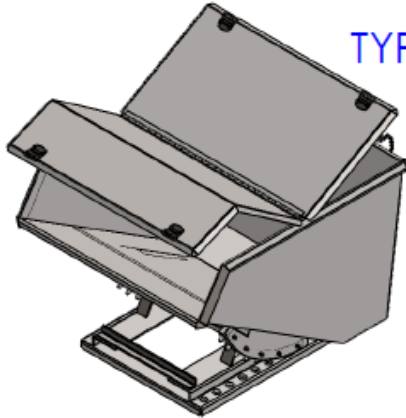
662.252.1421

ROURAMH.COM

COVER TYPE DRAWING

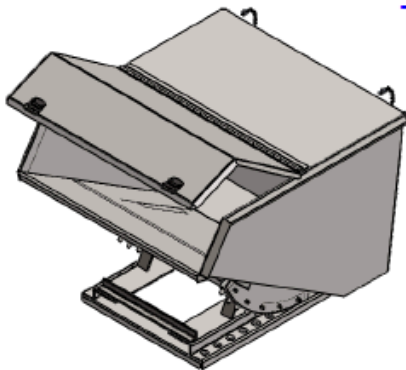


STEEL COVERS FOR HOPPERS



TYPE-A CENTER HINGED COVER
RECOMMENDED FOR
MODELS 105-675

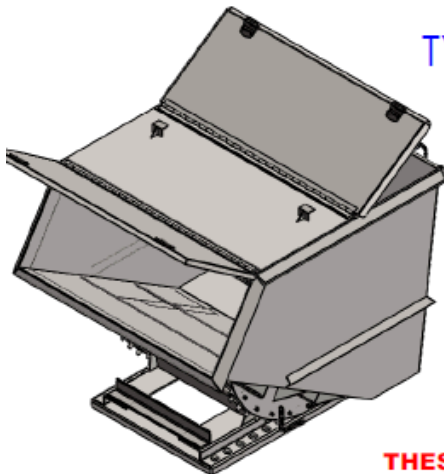
OPENING SECTIONS
MADE OF 14 GAUGE
HOT ROLLED STEEL



TYPE-B FIXED BACK COVER
RECOMMENDED FOR
MODELS 105-675

OPENING SECTION
MADE OF 14 GAUGE
HOT ROLLED STEEL

FIXED SECTION
MADE OF 12 GAUGE
HOT ROLLED STEEL

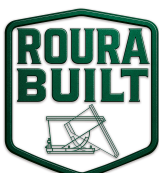


TYPE-D FIXED CENTER COVER
RECOMMENDED FOR
MODELS 680-1500

OPENING SECTIONS
MADE OF 14 GAUGE
HOT ROLLED STEEL

FIXED SECTION
MADE OF 12 GAUGE
HOT ROLLED STEEL

THESE ITEMS ARE NON-RETURNABLE



“FOR ALL OF YOUR MATERIAL HANDLING NEEDS!”