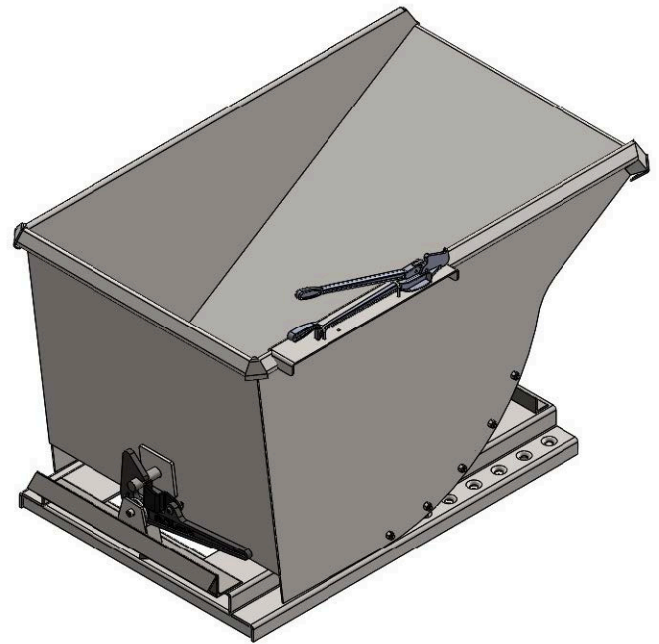
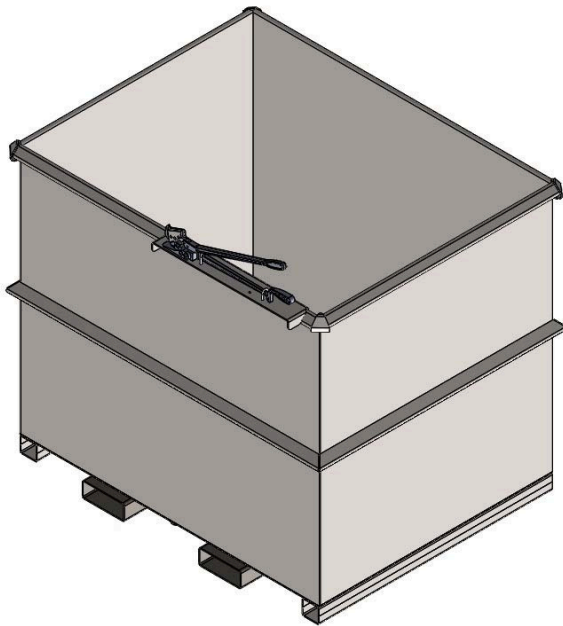




CLINTON TOWNSHIP, MI  
586.790.6100  
HOLLY SPRINGS, MS  
662.252.1421  
[ROURAMH.COM](http://ROURAMH.COM)

# BAND CUTTER

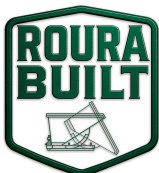
BC-ASM



**Description:** Roura's band cutter option is a safe and efficient way to dispose of your used banding material issues. Simply insert the steel banding into the mounted band cutter to cut long and dangerous lengths of banding material into the hopper or rotator box.

**Note:** Provide hopper model number to ensure order accuracy. This option will add 2-1/2" to the overall dimension of the container (refer to the container spec sheet).

**This option and the container it is mounted to is not returnable.**



**“FOR ALL OF YOUR MATERIAL HANDLING NEEDS!”**