

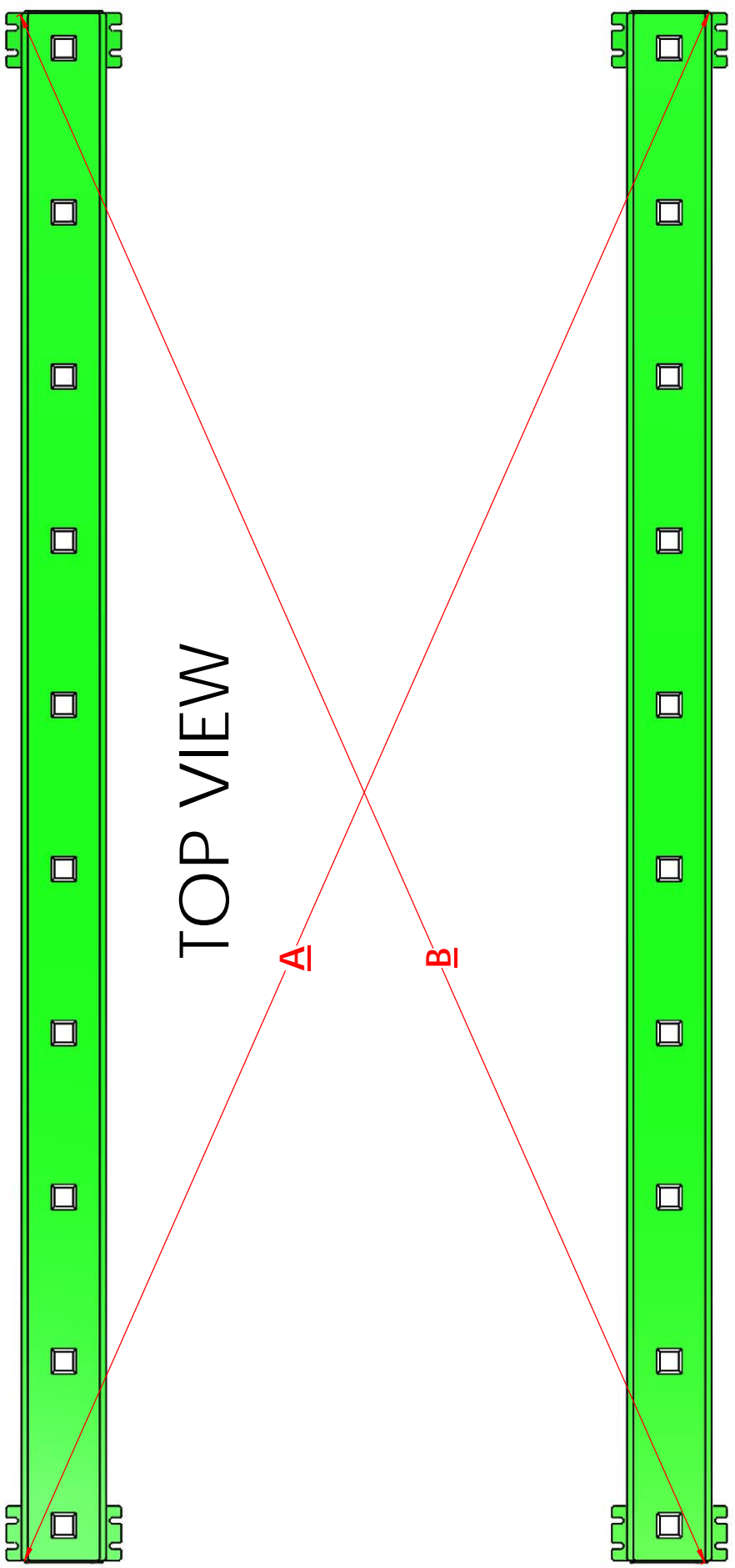
# Roura Material Handling, Inc.

35355 Forton Ct. Clinton Twp., Mi. 48035  
Ph. (586)790-6100 Fax (586)790-6102  
[www.RouraMH.com](http://www.RouraMH.com)

## SLAB PIN RACK OPERATION AND SERVICE INSTRUCTION

- Make sure that all operation, service and safety information for this product is carefully read and understood before the slab pin rack product is to be used.
- The slab rack product should only be used to store stone slabs in its design position (as shown in **figure 1, 2,3**). Proper stone storage angle is very important as shown in **figure # 1**.
- Always fasten slabs carefully before placement of the material onto the slab rack.
- Never **walk under or stand under a suspended load**.
- Always keep the operation, service and safety documentation near the slab rack product while in use for future reference.
- In case of damaged product, please contact the manufacturer or dealer immediately.
- Always inspect parts to insure components are properly assembled and installed.
- Handle stone with care while the stone slabs are on slab racks.
- All slab racks should be located on level, flat and hard ground for proper installation.
- All slab racks should be secured to floor with provided bolt holes in each base rail.
- When adding multiple slab racks together for extending its length, always use the provided bolt slots at the end of each base rail and secure units together properly with fasteners.
- When setting the position of each slab rack on a level, flat and hard surface, always make sure that the slab rack position for each base rail is squared up to itself as indicated in **figure # 2**.
- When installing the rack pin, always make sure that the pin bottoms out on the base plate as shown in **figure # 3**. Failure to ensure proper pin placement, may cause human injury, material damage and/or slab rack damage.
- Always make sure that no personnel are near the area of this product during use/storage.
- Roura slab racks are designed for slab storage only. Never use this product for transporting slabs.
- Be sure to execute safe clothing practices when using this product in accordance with valid regulation.
- Always provide a clean and well lit area for the slab rack product during use to avoid dangerous environment.
- Remove all articles from the work/storage area, which can have a negative impact on the proper use of the slab rack.
- Always inspect the slab rack before each use. Check all parts and welded seams for damage or rusted surfaces to the product. In case of defects, **DO NOT USE THE SLAB RACK**. Report all defected issues to the appropriate personnel.
- **ONLY AUTHORIZED PERSONS MAY USE THE SLAB RACK. EACH USER MUST HAVE READ AND UNDERSTOOD THIS DOCUMENT.**

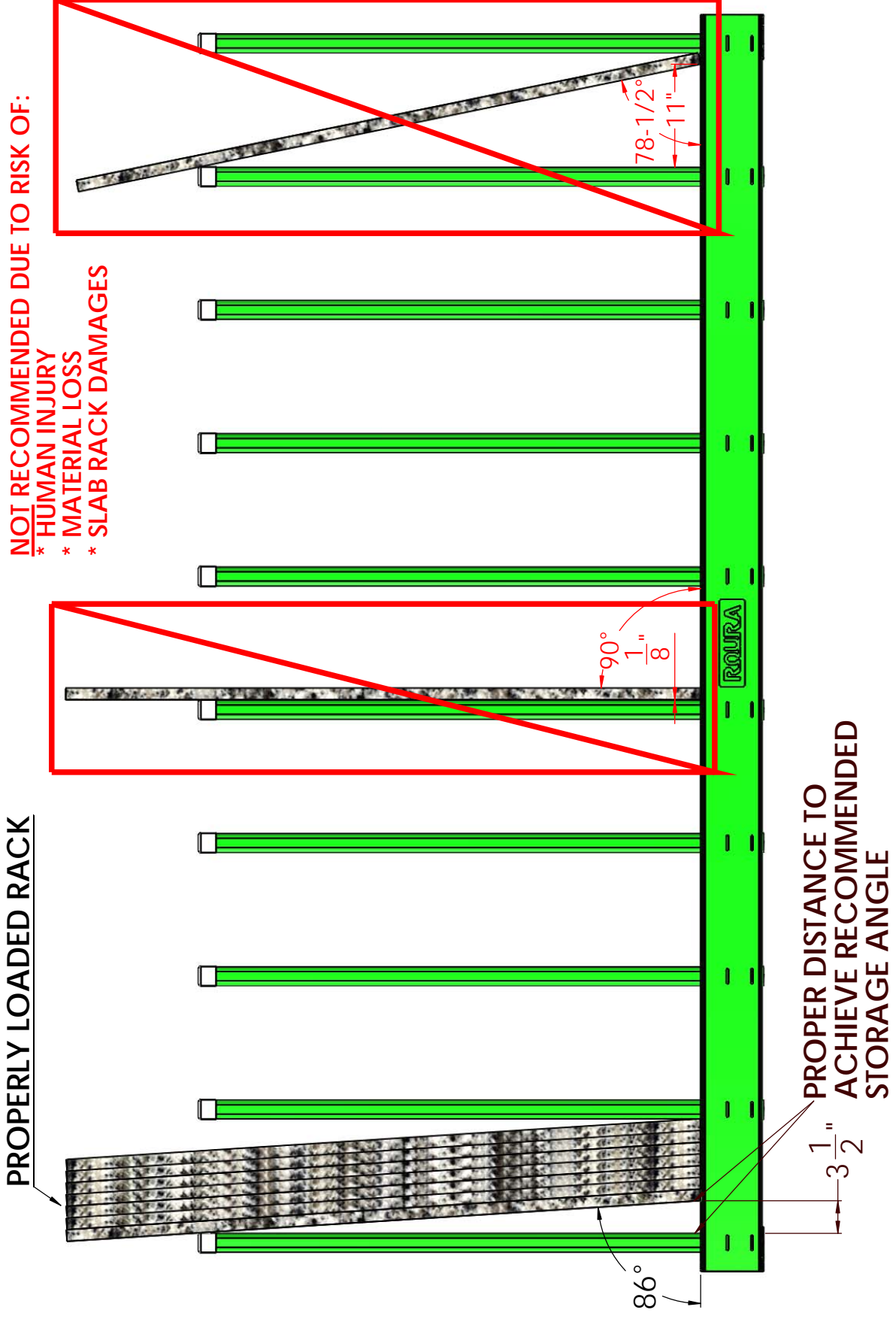
# ROURA SLAB RACK



TO INSURE SAFE PLACEMENT OF MATERIAL  
DIMENSION- **A** AND DIMENSION- **B** SHOULD BE EQUAL

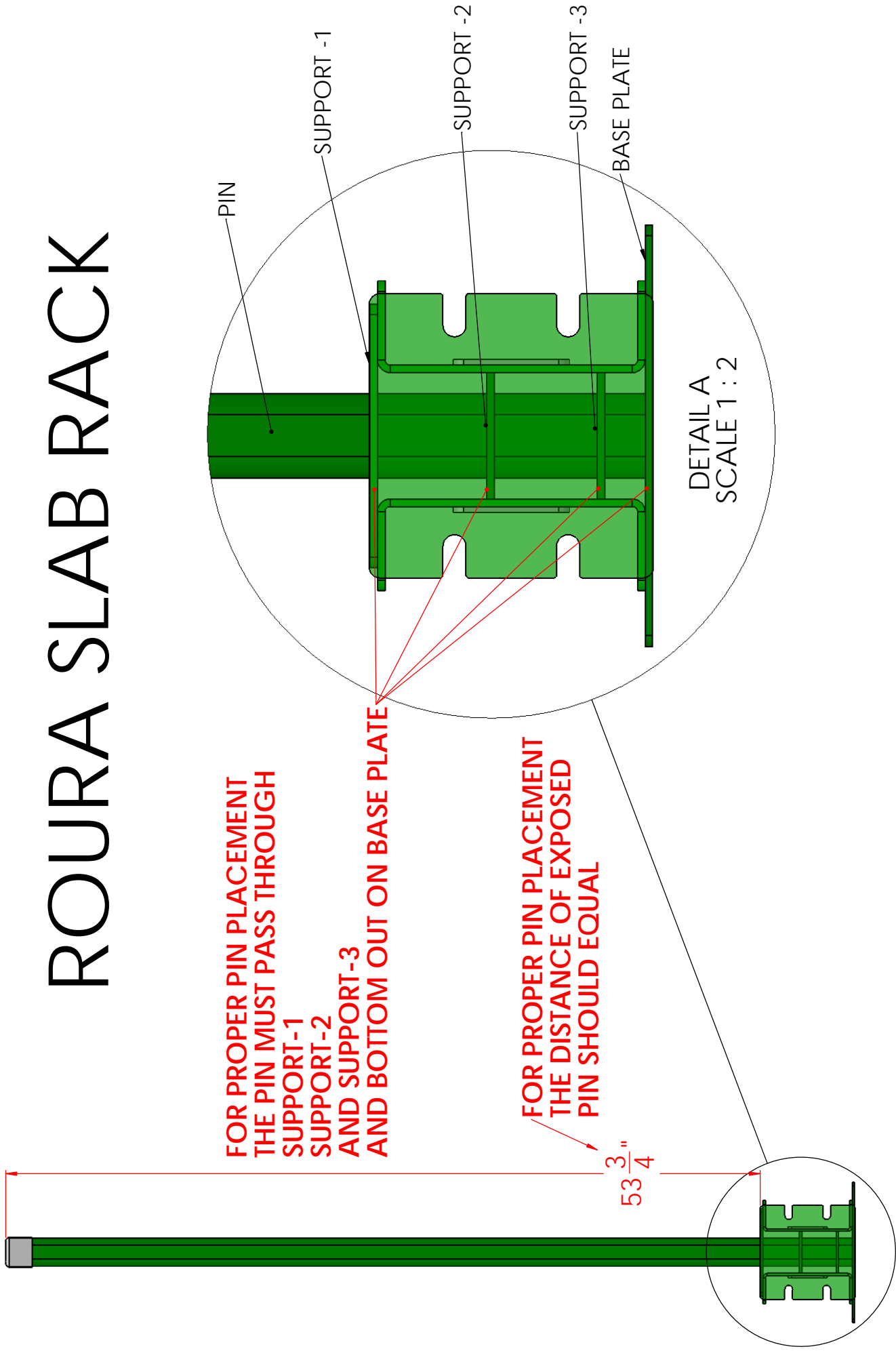
**FIGURE #2**

# ROURA SLAB RACK



**FIGURE #1**

# ROURA SLAB RACK



**FIGURE #3**