

Roura Material Handling, Inc.

35355 Forton Ct. Clinton Twp., Mi. 48035

Ph. (586)790-6100 Fax (586)790-6102

www.RouraMH.com

REMNANT PIN RACK OPERATION AND SERVICE INSTRUCTION

- Make sure that all operation, service and safety information for this product is carefully read and understood before the remnant pin rack product is to be used.
- The remnant rack product should only be used to store smaller cuts of stone in its design position (as shown in **figure 1, 2,3**). Proper stone storage angle is very important as shown in **figure # 1**.
- Never **walk under or stand under a suspended load**.
- Always keep the operation, service and safety documentation near the remnant rack product while in use for future reference.
- In case of damaged product, please contact the manufacturer or dealer immediately.
- Always inspect parts to insure components are properly assembled and installed.
- Handle stone with care while the stone slabs are on remnant racks.
- All remnant racks should be located on level, flat and hard ground for proper installation.
- All remnant racks should be secured to floor with provided bolt holes slots in each base rail.
- When adding multiple remnant racks together for extending its length, always use the provided bolt slots at the end of each base rail and secure units together properly with fasteners.
- When setting the position of each remnant rack on a level, flat and hard surface, always make sure that the remnant rack position for each base rail is squared up to itself as indicated in **figure # 3**.
- When installing the remnant rack pin, always make sure that the pin bottoms out on the base plate as shown in **figure # 2**. Failure to ensure proper pin placement, may cause human injury, material damage and/or slab rack damage.
- Always make sure that all personnel are **NOT** near the area of this product during use/storage.
- Roura remnant racks are designed for storage of smaller cuts of stone. Never use this product for transporting any type of stone products.
- Be sure to execute safe clothing practices when using this product in accordance with valid regulation.
- Always provide a clean and well lit area for the remnant rack product during use to avoid dangerous environment.
- Remove all articles from the work/storage area, which can have a negative impact on the proper use of the remnant rack.
- Always inspect the remnant rack before each use. Check all parts and welded seams for damage or rusted surfaces to the product. In case of defects, **DO NOT USE THE REMNANT RACK**. Report all defected issues to the appropriate personnel.
- **ONLY AUTHORIZED PERSONS MAY USE THE REMNANT RACK. EACH USER MUST HAVE READ AND UNDERSTOOD THIS DOCUMENT.**

ROURA REMNANT RACK

REMNANT SLAB IS NOT
TO BE OVER 40" TALL

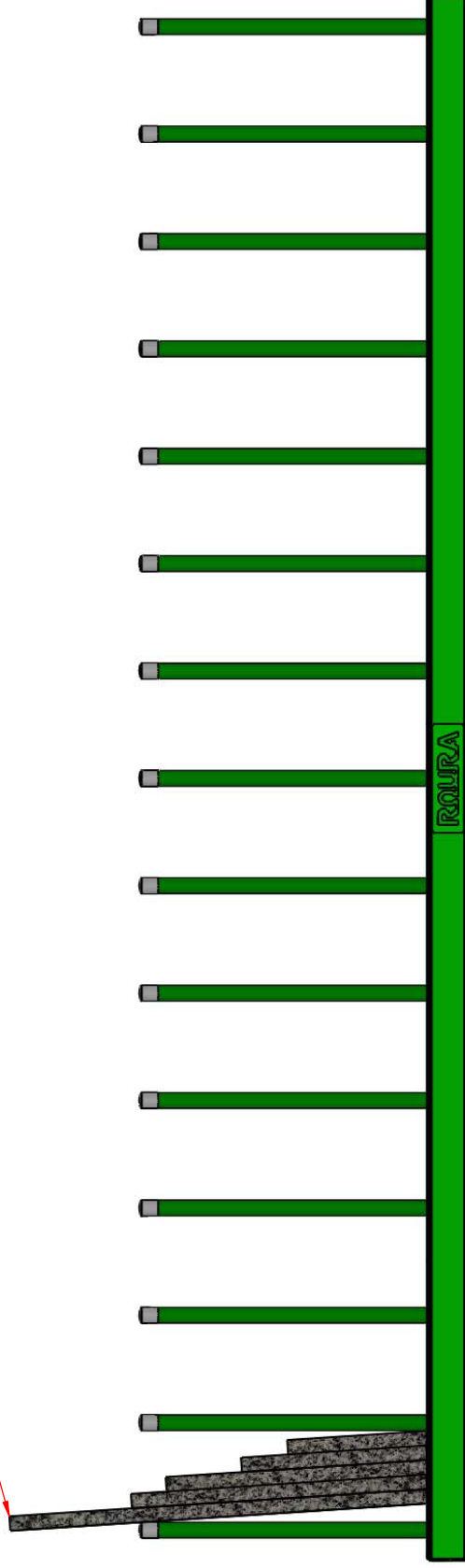
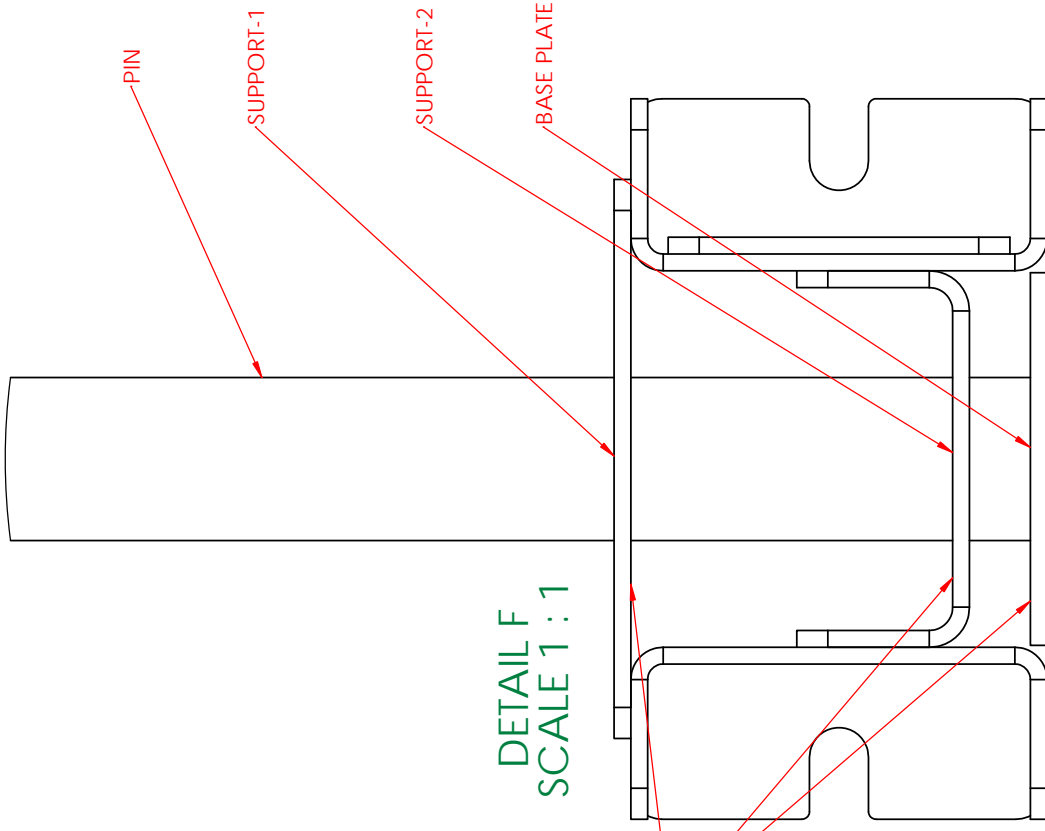


FIGURE # 1



**FOR PROPER PIN PLACEMENT
THE DISTANCE OF EXPOSED
PIN SHOULD EQUAL $24\frac{5}{8}$ "**

**FOR PROPER PIN PLACEMENT
THE PIN MUST PASS THROUGH
SUPPORT-1
AND BOTTOM OUT ON THE BASE PLATE**

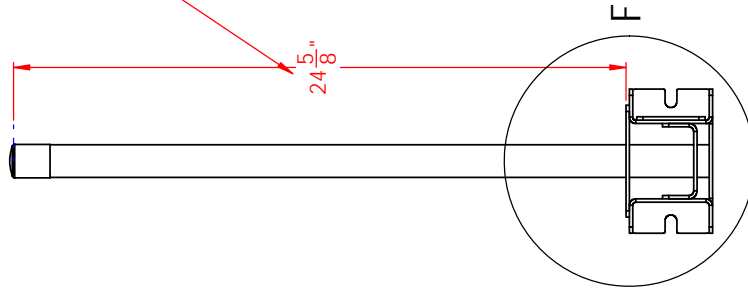
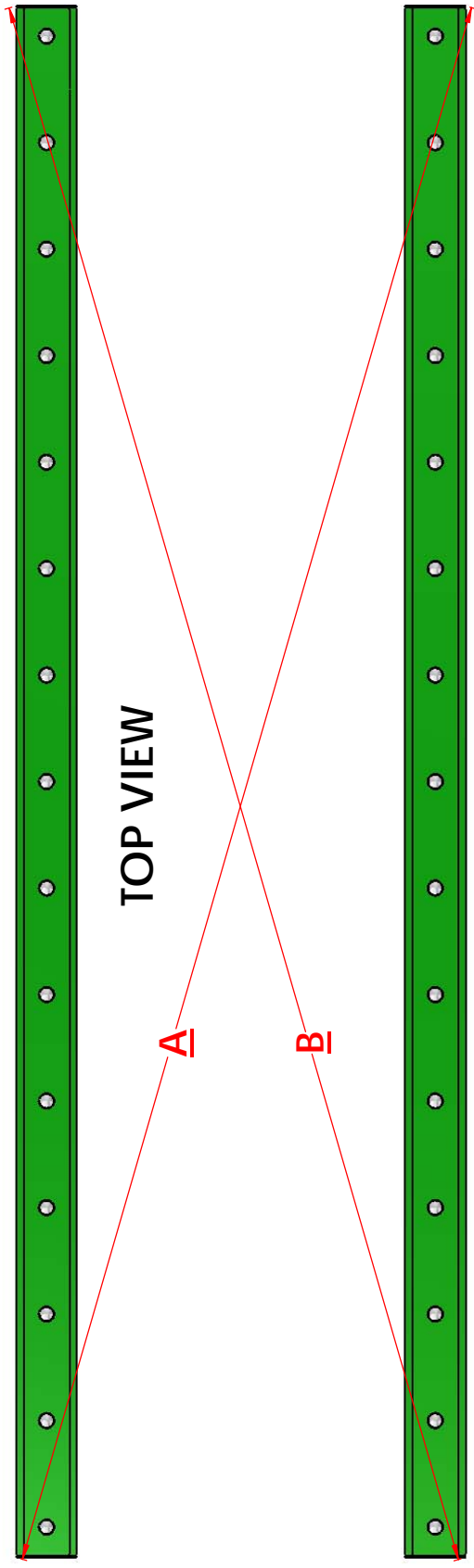


FIGURE # 2

ROURA REMNANT RACK



TO INSURE SAFE PLACEMENT OF MATERIAL
DIMENSION-A AND DIMENSION-B SHOULD BE EQUAL

FIGURE # 3