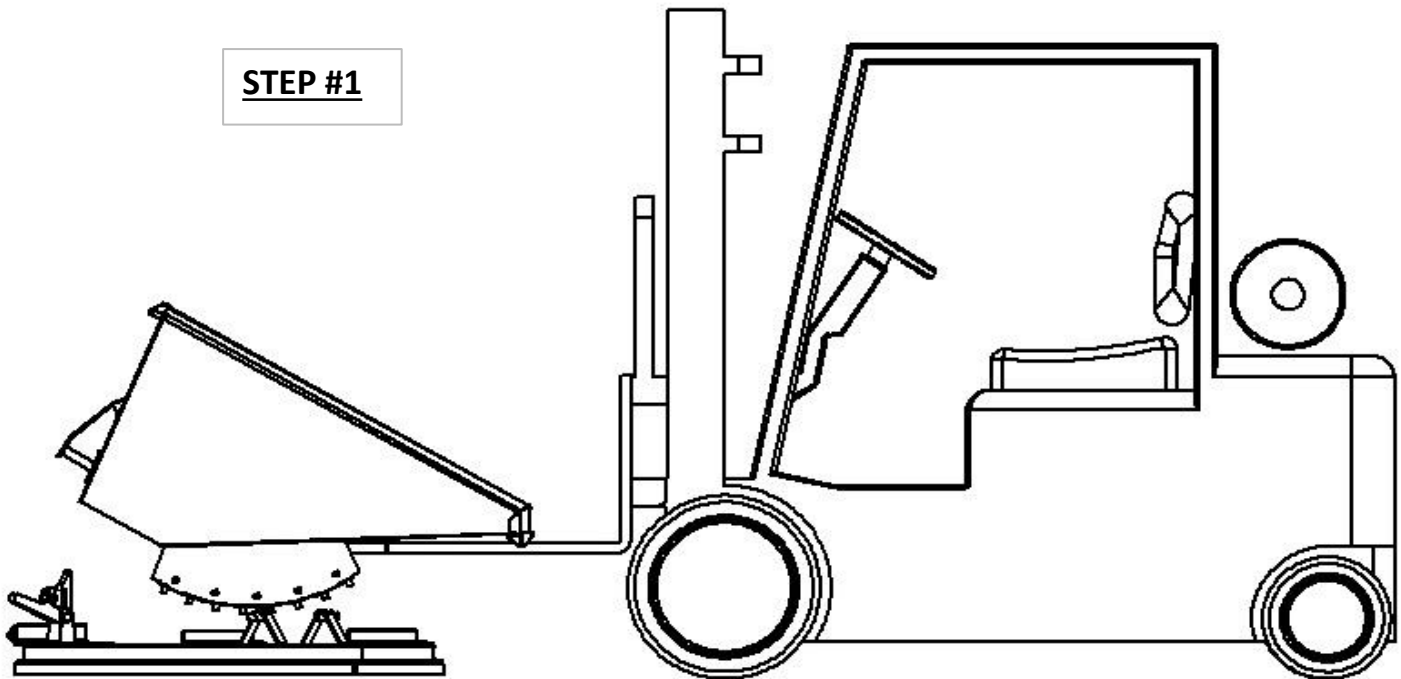


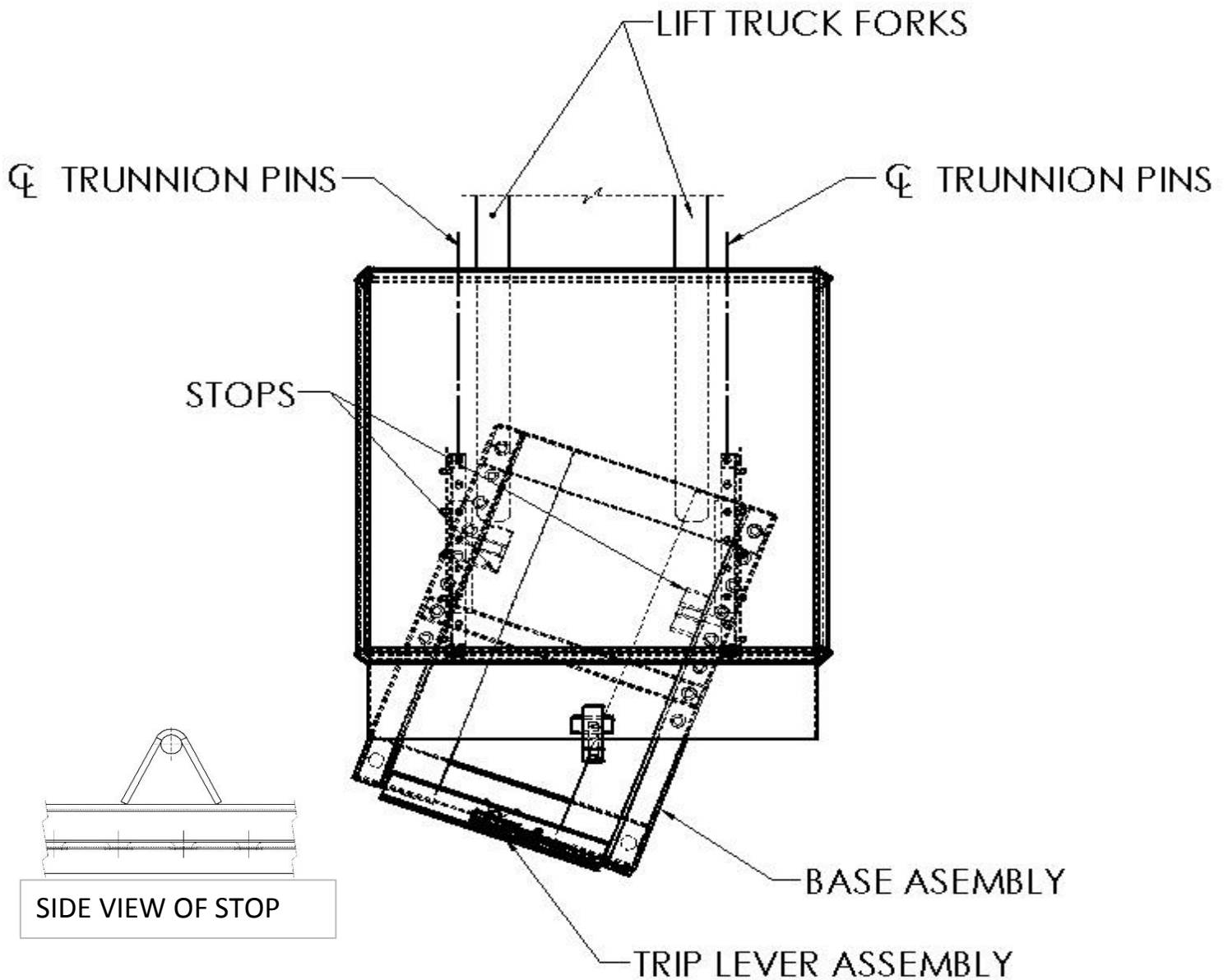


RESETTING SELF-DUMPING HOPPER BODY ONTO THE BASE ASSEMBLY

NOTE: USE A FORK LIFT TRUCK TO LIFT THE HOPPER BODY AND HOLD IT ABOVE THE BASE ASSEMBLY WHEN RESETTING THE BODY ONTO THE BASE PER THE DRAWING BELOW.



STEP #1 - POSITION BASE ASSEMBLY BELOW THE HOPPER BODY SO THAT THE ENDS OF THE HOPPER STOPS WILL NOT HIT THE ROCKER ANGLES WHEN THE BODY IS LOWERED DOWN TO WITHIN 1/2" OF THE BASE.



TOP VIEW OF HOPPER BODY AND BASE ASSEMBLY WHEN RESETTING BODY ONTO BASE.

- STEP #2 - ONCE YOU HAVE LOWERED THE BODY IN THIS DIRECTION:
 THE ENDS OF THE 1-1/4" DIA. STOPS SHOULD NOW BE INSIDE THE
 ROCKER ANGLES.
- STEP #3 - LINE UP THE TRUNNION PINS OVER THE TRACK HOLES AND LOWER THE
 BODY ONTO THE BASE.